

HISLB Load Sensor Shear Beam Load Cell

PROCESS WEIGHING

Applications

- Vessel or Tank Weighing
- Conveying Systems
- Bench Scales/Floor Scales
- Batching/Blending
- Filling/Dispensing/Dosing



Features

THE HARDY PROCESS TOOLBOX

The Hardy Process Toolbox is a set of productivity tools that delivers value across process weighing functions. Each tool saves time, increases accuracy, improves efficiency or reduces risk in your process weighing applications.



Electronic calibration without test weights



Weighing system monitoring, diagnostics and troubleshooting



Environmentally Sealed up to IP67

The Hardy HISLB is a high-accuracy, shear beam load cell ideal for a wide variety of scales and other process weighing applications.

Constructed entirely from 17-4 PH (1.4548) stainless steel and environmentally sealed, it offers exceptional durability and performance. The HISLB is rated to Class III accuracy level.

The HISLB comes in five different capacity models ranging from 200 lbs to 5Klbs (91 kg to 2.27 mt). A threaded blind hole allows connection to self-aligning load feet to ensure optimum weighing accuracy.

IDEAL FOR PLATFORM SCALES

The HISLB was designed for tank and vessel weighing or incorporation into conveyor weighing, bench scales, platform scales and floor scales. When coupled with a Hardy instrument, summing card and feet, the HISLB is a common form factor and may be used to upgrade existing scale frames with Hardy C2 capabilities.

C2 CALIBRATION

HISLB load cells are designed with Hardy's exclusive C2[®] Calibration for automatic system calibration to save hours in commissioning and routine maintenance. By reading the calibration with certificate data embedded electronically in the C2 sensor, the load cell can be calibrated the touch of a button, avoiding a time consuming traditional calibration procedure. This is essential for multi-head fillers where access to the load cell for traditional calibration requires taking the machine apart.



An optional flexible threaded rubber foot makes the HISLB load cell versatile and easy to design into scales

SPECIFICATIONS	Units	HISLB
Maximum Capacity (E _{max})	lbs	200 / 500 / 1,000 / 2,500 / 5,000
Maximum Capacity (E _{max})	kgs	91 / 227 / 454 / 1,134 / 2,268
Accuracy Class		III
Max number verification intervals	n _{max}	3000
Min load cell verification interval	v _{min}	E _{max} / 11500
Combined Error	%RO	± 0.0200
Non-Linearity	%RO	± 0.0166
Hysteresis	%RO	± 0.0166
Creep error (30 Minutes) / DR	%RO	± 0.0166
Temperature effect on min dead load output	%RO/10°C	± 0.0122
Temperature effect on sensitivity	%RO/10°C	± 0.0100
Rated Output (RO)	mV/V	2 ± 0.1%
Zero Balance	%RO	± 5
Excitation Voltage	V	5-15
Input Resistance	Ω	1100 ± 50
Output Resistance	Ω	1,000 ± 2
Insulation resistance (100VDC)	MΩ	≥ 5000
Load Cell Safe Load Limit	%E _{max}	200
Load Cell Ultimate Load Limit	%E _{max}	300
Load Cell Safe Side Load	%E _{max}	100
Maximum Platform Size	mm	500 x 400
Compensated Temperature Range	°C	-10 ... ±40
Operating Temperature Range	°C	-40 ... ±80
Load Cell Material		Stainless Steel 17-4PH (1.4548)
Sealing		Environmentally Sealed
Protection according to EN 60 529		IP67
Cable Length	ft	10 ft
Manufacturer's Warranty		Two Years

MODEL	CAPACITY	MOUNTING BOLTS
HISLB-200LB	200LB/91KG	.500-20 UNC GRADE 5
HISLB-500LB	500LB/227KG	.500-20 UNC GRADE 5
HISLB-1000LB	1000LB/454KG	.500-20 UNC GRADE 5
HISLB-2500LB	2500LB/1134KG	.500-20 UNC GRADE 5
HISLB-5000LB	5000LB/2268KG	.500-20 UNC GRADE 8

Cable Length: 10 ft. (3 Meters)

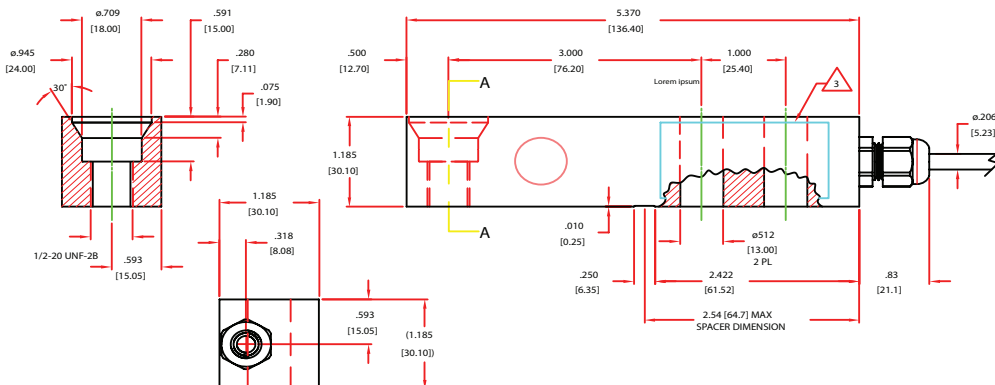
Dimensions: H 1.185 in (31 mm) x 5.370 in (136.4 mm) x W 1.185 in (31 mm)

Mounting Bolt Torque: 66 ft. lbs [90 KN] except 500 LB Capacity 88 ft.lbs [120 KN]

Optional Threaded Foot: HIHARF8 threads 1/2-20 UNF - 2B

C2 WIRE COLOR CODE FLAG LABEL IS FOUND APPROX. 10 IN. FROM END OF SENSOR'S CABLE	
EXCITATION +	RED
EXCITATION -	BLACK
SIGNAL +	GREEN
SIGNAL -	WHITE
C2+*	GRAY
C2-*	VIOLET
SHIELD	YELLOW

WARNING: NEVER cut load sensor cable



All information within is subject to change without notice. Visit our website for latest specifications. WAVERSAVER, C2, IT, ADVANTAGE and ANY-WEIGH are registered trademarks of Hardy Process Solutions, Inc. All other trademarks or registered trademarks are the property of their respective owners.

HARDY
PROCESS SOLUTIONS
 Measurement • Automation • Productivity

10075 Mesa Rim Road
 San Diego, CA 92121
 tel. +1-858-278-2900
 tel. 800-821-5831
 www.hardysolutions.com
 hardyinfo@hardysolutions.com



HISLB Series 0624
 0400-HISLBA