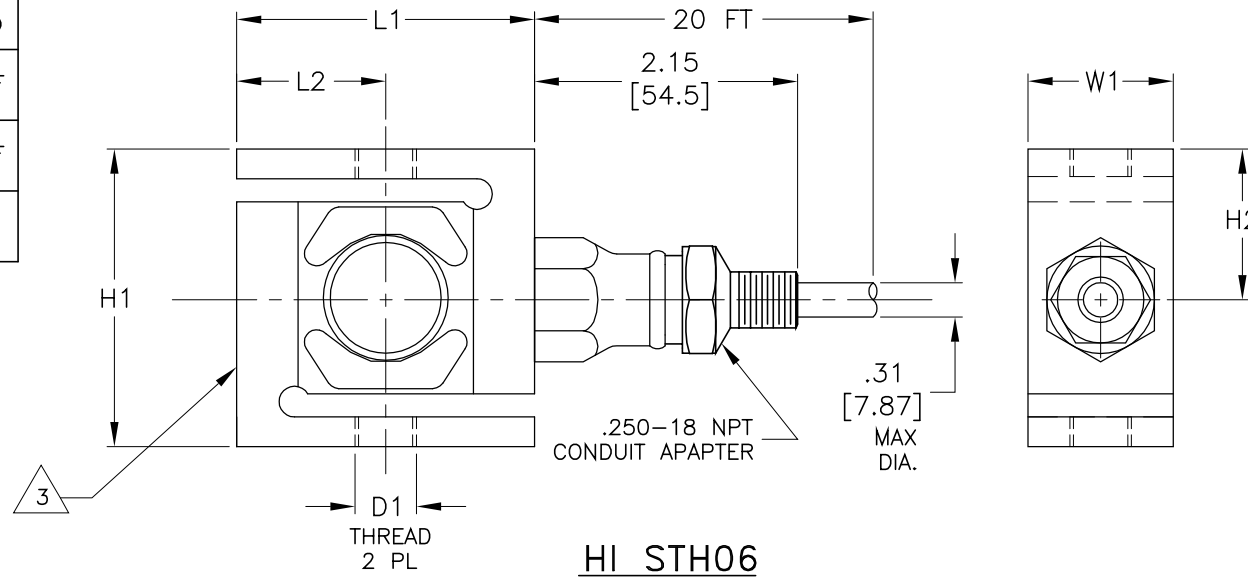


REV.	ECO/DDC	DESCRIPTION	DATE	DRAFT	CHECK	APV'D
A	08107	RELEASED	07-09-01	L.B.O.	S.N.	V.J.C.
B	10272	REVISED PER ECN.	01-09-08	T.B.N.	S.N.	V.J.C.

DIMENSIONS- INCHES & [mm]

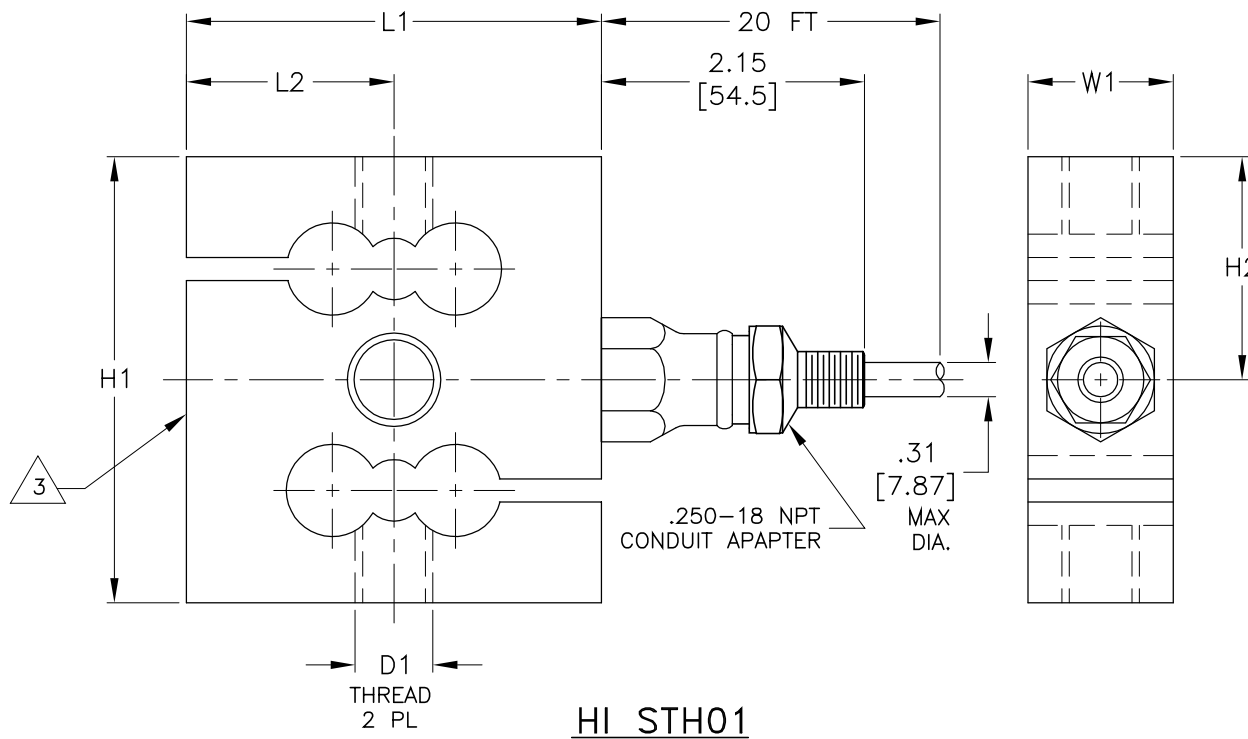
CAPACITY LBS [kN]	H1	H2	L1	L2	W1	D1 THREAD
225, 450, 1125 [1] [2] [5]	2.42 [61.5]	1.21 [30.7]	2.42 [61.5]	1.21 [30.7]	1.18 [30.0]	.500-20 UNF
2.25K, 4.5K [10] [20]	3.62 [92.0]	1.81 [46.0]	3.38 [86.0]	1.69 [43.0]	1.18 [30.0]	.625-18 UNF
11.25K [50]	5.35 [136.0]	2.86 [68.0]	5.62 [143.0]	2.81 [71.5]	1.69 [43.0]	1-12 UNF

TOLERANCES: ±0.015 [0.4] UNLESS OTHERWISE STATED



HI STH06

CAPACITY LBS [kN]	MODEL NUMBER	PART NUMBER
225 [1]	HI STH06-225	0554-0013-01
450 [2]	HI STH06-450	0554-0013-02
1125 [5]	HI STH06-1125	0554-0013-03
2.25K [10]	HI STH01-2.25K	0554-0014-01
4.5K [20]	HI STH01-4.5K	0554-0014-02
11.25K [50]	HI STH01-11.25K	0554-0014-03



HI STH01

- LOAD SENSOR IS STAINLESS STEEL 17-4PH (1.4548).
- CABLE IS 6 CONDUCTOR, SHIELDED AND 20 FT. IN LENGTH. CABLE SHIELD IS FLOATING.
- C2 WIRE COLOR CODE FLAG LABEL, PN 0530-0594, IS FOUND APPROX. 10 IN. FROM END OF CABLE.

EXCITATION + RED
 EXCITATION - BLACK
 SIGNAL + GREEN
 SIGNAL - WHITE
 C2 + GRAY
 C2 - VIOLET
 SHIELD YELLOW

- CABLE WIRE ENDS ARE STRIPPED BACK 0.5 IN. AND TINNED. CABLE JACKET IS STRIPPED BACK APPROX. 5 IN.

3 LOCATION OF SERIAL NUMBER LABEL PN 0530-0345-XX.

- THIS DRAWING IS SUBJECT TO CHANGE WITHOUT NOTICE.

- RATED OUTPUT: 2mV/V ±0.002.

NOTES: UNLESS OTHERWISE SPECIFIED

PROPRIETARY NOTICE
 ALL DATA AND INFORMATION CONTAINED IN OR DISCLOSED BY THIS DOCUMENT IS CONFIDENTIAL AND PROPRIETARY INFORMATION OF HARDY INSTRUMENTS INC. AND ALL RIGHTS THEREIN ARE EXPRESSLY RESERVED. BY ACCEPTING THIS MATERIAL THE RECIPIENT AGREES THAT THIS MATERIAL AND THE INFORMATION CONTAINED THEREIN IS HELD IN CONFIDENCE AND IN TRUST AND SHALL NOT BE USED, COPIED, REPRODUCED IN WHOLE OR IN PART, NOR ITS CONTENTS REVEALED IN ANY MANNER TO OTHERS, EXCEPT TO MEET THE SPECIFIC PURPOSE FOR WHICH IT WAS DELIVERED.

ITEM	QTY	0588-0086	OUTLINE DRAWING, LOAD SENSOR, HI STH06/01 SERIES	COMMENTS
PARTS LIST				
UNLESS OTHERWISE SPECIFIED DIMENSIONS ARE IN INCHES TOLERANCES ARE: FRACTIONS: N/A DECIMALS: .XX AND .XXX = ±.015 ANGLES: N/A		CONTRACT NO.		HARDY INSTRUMENTS
MATERIAL: SENSOR- 17.4PH S.S. FITTINGS- 316 S.S.		APPROVALS		
FINISH: FITTINGS- ELECTRO POLISHED		DRAWN: R. BILEK	DATE: 08-06-99	
DO NOT SCALE DRAWING		CHECKED: L. OFTEDAHL	DATE: 09-02-99	
		APPROVED: T. KOPCZYNSKI	DATE: 09-24-99	
		ISSUED: K. McNULTY	DATE: 09-24-99	OUTLINE DRAWING, LOAD SENSOR, HI STH06/01 SERIES
		PRODUCTION	DATE	
SIZE	FSCM	DRAWING NO.		REV.
D	21316	0588-0086		B
FILE NAME: 588086B1.DWG		SCALE: NONE		SHEET 1 OF 1