

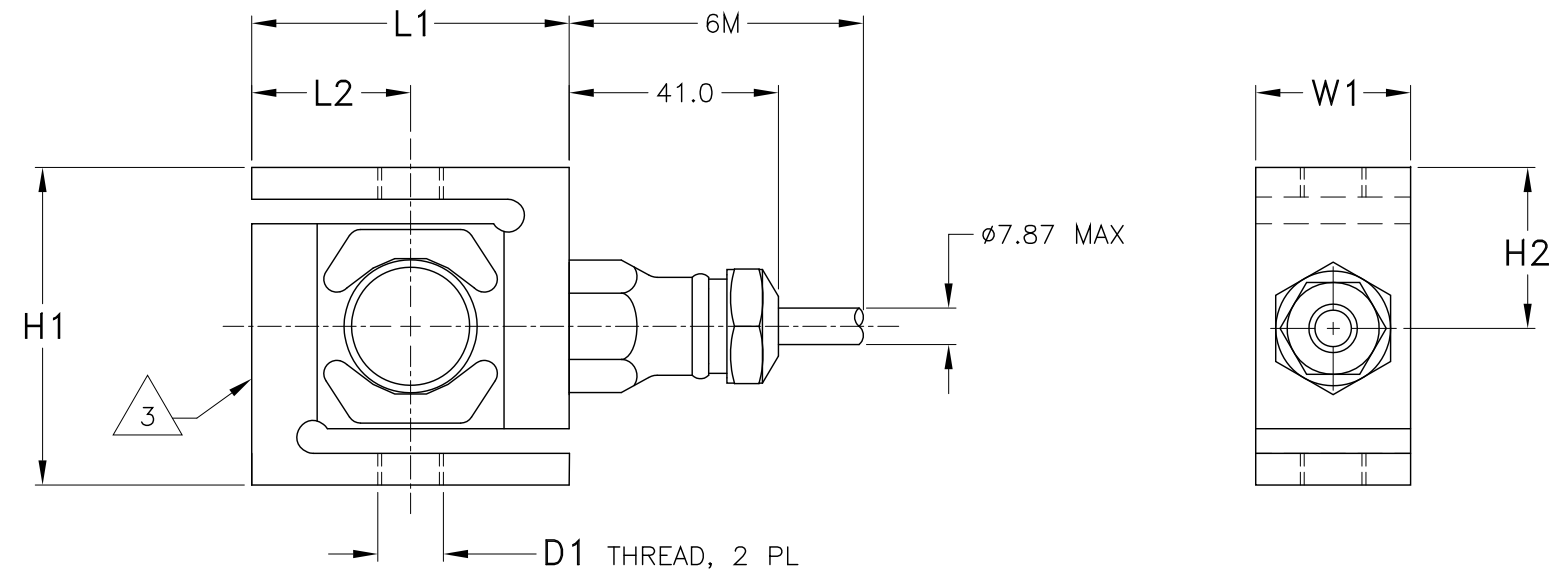
REV.	ECO/DDC	DESCRIPTION	DATE	DRAFT	CHECK	APV'D
A	----	RELEASED.	10-16-12	V.J.C.	D.F.D.	V.J.C.

DIMENSIONS IN MM

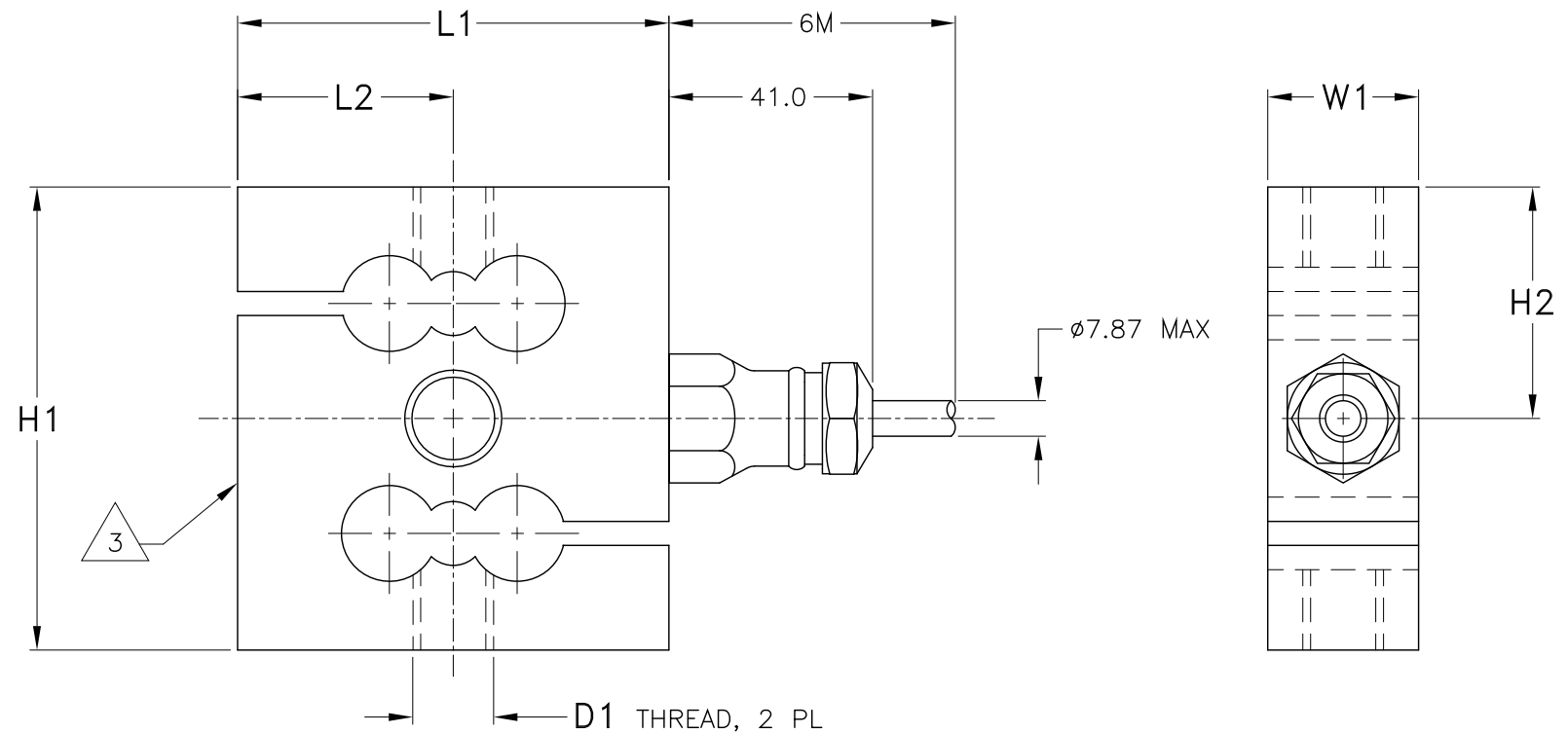
LOAD SENSOR MODEL NUMBER	CAPACITY KG	H1	H2	L1	L2	W1	D1
HI STH06-E100	100	61.5	30.7	61.5	30.7	30.0	M12
HI STH06-E200	200	61.5	30.7	61.5	30.7	30.0	M12
HI STH06-E500	500	61.5	30.7	61.5	30.7	30.0	M12
HI STH01-E1K	1000	92.0	46.0	86.0	43.0	30.0	M16
HI STH01-E2K	2000	92.0	46.0	86.0	43.0	30.0	M16
HI STH01-E5K	5000	136.0	68.0	143.0	71.5	43.0	M24

TOLERANCES: ±0.4 UNLESS OTHERWISE STATED

HI STH06-E SERIES



HI STH01-E SERIES



7. LOAD SENSOR IS STAINLESS STEEL 17-4PH (1.4548).
6. LOAD SENSOR CABLE IS 6 CONDUCTOR, SHIELDED AND 6M LONG. CABLE SHIELD IS FLOATING.
5. LOAD SENSOR WIRE COLOR CODE FLAG LABEL IS LOCATED APPROXIMATELY 254MM FROM END OF CABLE.

EXCITATION +	RED
EXCITATION -	BLACK
SIGNAL +	GREEN
SIGNAL -	WHITE
C2 +	GRAY
C2 -	VIOLET
SHIELD	YELLOW

4. CABLE WIRE ENDS ARE STRIPPED BACK 12.7MM AND TINNED. CABLE JACKET IS STRIPPED BACK APPROXIMATELY 127MM.

3 LOCATION OF SERIAL NUMBER LABEL.

2. THIS DRAWING IS SUBJECT TO CHANGE WITHOUT NOTICE.

1. RATED OUTPUT: 2mV/V ±0.002.

NOTES: UNLESS OTHERWISE SPECIFIED

PROPRIETARY NOTICE
 ALL DATA AND INFORMATION CONTAINED IN OR DISCLOSED BY THIS DOCUMENT IS CONFIDENTIAL AND PROPRIETARY INFORMATION OF HARDY PROCESS SOLUTIONS INC. AND ALL RIGHTS THEREIN ARE EXPRESSLY RESERVED. BY ACCEPTING THIS MATERIAL THE RECIPIENT AGREES THAT THIS MATERIAL AND THE INFORMATION CONTAINED THEREIN IS HELD IN CONFIDENCE AND IN TRUST AND SHALL NOT BE USED, COPIED, REPRODUCED IN WHOLE OR IN PART, NOR ITS CONTENTS REVEALED IN ANY MANNER TO OTHERS, EXCEPT TO MEET THE SPECIFIC PURPOSE FOR WHICH IT WAS DELIVERED.

		0588-0145	OUTLINE DRAWING, LOAD SENSOR, HI STH06-E/-01-E SERIES		
ITEM	QTY	PART NUMBER	DESCRIPTION	COMMENTS	
PARTS LIST					
UNLESS OTHERWISE SPECIFIED DIMENSIONS ARE IN MM TOLERANCES ARE: FRACTIONS: N/A DECIMALS: .X = ±.4 .XX = ±.40 ANGLES: N/A		CONTRACT NO.		HARDY PROCESS SOLUTIONS	
		APPROVALS			
		DRAWN V. CHULA	DATE 10-15-12		
		CHECKED D. DRAKE	DATE 10-15-12		
MATERIAL		APPROVED V. CHULA	DATE 10-16-12	TITLE OUTLINE DRAWING, LOAD SENSOR, HI STH06-E/01-E SERIES	
FINISH		ISSUED V. CHULA	DATE 10-16-12		
DO NOT SCALE DRAWING		PRODUCTION	DATE		
SIZE	FSCM	DRAWING NO.	REV.		
D	21316	0588-0145	A		
FILE NAME: 588145A1.DWG		SCALE: NONE	SHEET 1 OF 1		